

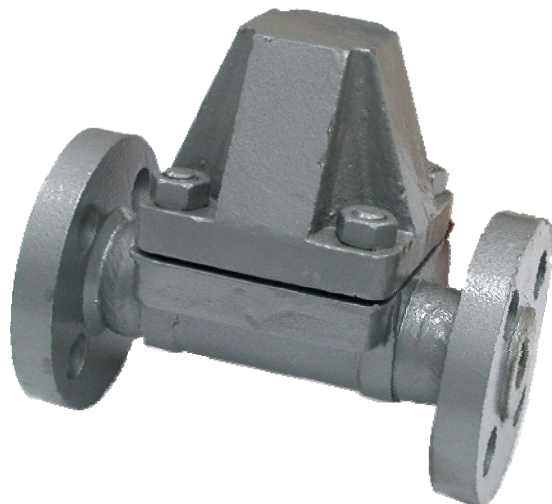
SHANGHAI CIHPY INDUSTRY CO.,LTD.

CAST STEEL OR STAINLESS STEEL STEAM TRAP BIMETALLIC DESIGN

MODEL NO: STDXRF-CS47

STEAM TRAP PRODUCT'S SIZE:

PRESSURE GRADE	FROM	TO
PN25	DN15	DN50



DESIGN DESCRIPTION:

- * STRONG, RELIABLE BODY,
- * COMPACT STRUCTURE, EASY TO INSTALL AND MAINTAIN,
- * RESISTANT TO WATERHAMMER AND FREEZING,
- * CONDENSATE RELEASED ATE BELOW SATURATION
- * TEMPERATURE REDUCING AMOUNT OF FLASH STEAM,
- * NO NOISE WHEN WORKING
- * CONTINUING DRAIN CHARACTERISTIC,
- * DESIGN: FACTORY STANDARDS
- * MAXIMUM BACK PRESSURE AS PERCENT INLET PRESSURE, 60%.
- * TEST PRESSURE SHELL: 37BAR G.
- * FLUID APPLICATION: VAPOR, CONDENSATION.
- * MEDIA MINIMUM TEMPERATURE: 25° C
- * END FLANGE: ANSI,BS,DIN,JIS.

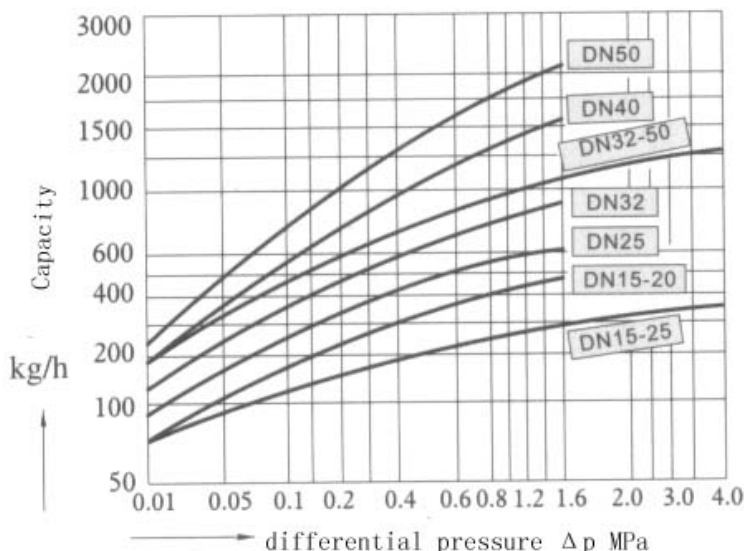
MAXIMUM ALLOWABLE WORKING PRESSURE AND TEMPERATURE:

PRESSURE RATING	CELSIUR SCALE
PN25	0°C~350°C

TEST PRESSURE:

PN	SHELL (WATER)	WORKING STATION (STEM)
25	3.75MPA	1.6MPA

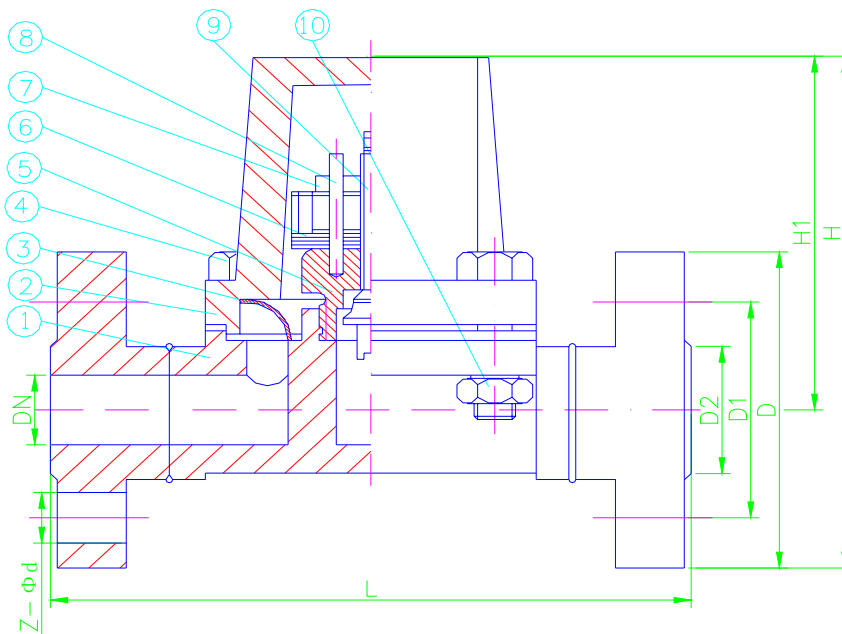
CAPACITY CHART:



PARTS AND MATERIAL :

NO.	PARTS NAME	MATERIALS
1	BODY	ASTM A105/F304/F316
2	COVER	ASTM A216/CF8/CF8M
3	SCREEN	SS304/SS316
4	COVER BOLT	ASTM A193 B7
5	SEAT	ASTM A105/F304/F316
6	BIMETAL	STAINLESS STEEL
7	LOCKING NUT	STAINLESS STEEL
8	LEADER	STAINLESS STEEL
9	ADJUSTABLE SHAFT	STAINLESS STEEL
10	COVER NUT	ASTM A194 2H

OTHER MATERIALS ARE AVAILABLE UPON REQUEST.

**DIMENSIONS LIST(UNIT:mm):**

DN	NPS	L	D	D1	D2	H	Z-Φd
15	1/2"	150	95	65	45	130	4-14
20	3/4"	150	105	75	55	135	4-14
25	1"	160	115	85	65	140	4-14
32	1-1/4"	230	135	100	78	170	4-18
40	1-1/2"	230	145	110	85	185	4-18
50	2"	230	160	125	100	195	4-18

*** We hereby reserve the rights of any alternative dimension that would help to improve our valve's quality and working efficiency**



SHANGHAI CIPHY INDUSTRY CO.,LTD
7G-1 Building, N0.515 Yishan Rd.
Shanghai, China
TEL:+86-21-5497 5962
FAX:+86-21-5497 5963
HTTP://WWW.CIPHY.CN
CIPHY@CIPHY.COM
COPYRIGHT©2004-[CIPHY]
ALL RIGHTS RESERVED