

SHANGHAI CIHPY INDUSTRY CO.,LTD.

Q/JBG NO.2 CAST IRON OR CAST STEEL PNEUMATIC PITCH VALVE

MODEL NO: SHDXRF-000



Pitch VALVE PRODUCT'S SIZE:

PRESSURE GRADE	FROM	TO
PN 10	1-1/2"	12"

DESIGN DESCRIPTION:

- * BOLTED BONNET;
- * FULLY GUIDER;
- * HANDWHEEL OPERATOR;
- * FLANGED ENDS;

WORKING TEMPERATURE:

WORKING TEMPERATURE	
MATERIAL	CELSIUR SCALE
CAST IRON	0°C~80°C
ALUMIN ALLOY	0°C~80°C
CAST STEEL	0°C~80°C

WORKING PRESSURE:

SIZE(DN)	DN25~200	DN250~300
WORKING PRESSURE	MAX 4 BARS	MAX 3 BARS
CONTROL PRESSURE	MAX 6 BARS	MAX 4.5 BARS
DIFFERENT WORKING	MAX 2 BARS	MAX 1.5 BARS

GENERAL DESIGN SPECIFICATIONS:

ITEM	BRITISH STANDARD
MANUFACTURE	FACTORY STANDARDS
PRESSURE-TEMPERATURE RATINGS	0°C~80°C
FACE TO FACE	CHINA STANDARSD
END FLANGE	DIN2533
INSPECTION AND TEST	MANUFACTURE

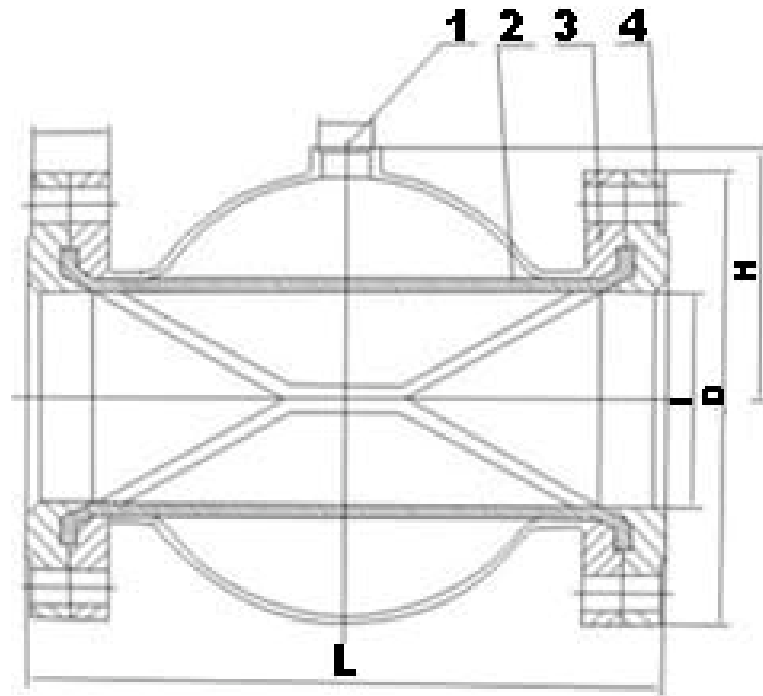
TEST PRESSURE TO MANUFACTURE:

PN	SHELL (WATER)	SEAT(WATER)
4	0.4MPA	0.4MPA
6	0.6MPA	0.6MPA

PARTS AND MATERIAL (ASTM):

NO.	PARTS NAME	MATERIALS
1	BODY	CAST IRON OR CAST STEEL OR ALUMIN ALLOY
2	PITCH	NBR OR EPDM
3	FLANGE	STAILESS STEEL OR CARBON STEEL

OTHER MATERIALS ARE AVAILABLE UPON REQUEST.



DIMENSIONS LIST(UNIT:MM):

Size (DN)	40	50	65	80	100	125	150	200	250	300
L	150	180	180	220	276	345	414	550	680	820
H	40	60	60	75	95	120	145	182	229	278
I	26	27	28	30	36	48	52	65	82	98
D	150	165	200	200	220	250	285	340	405	480
Flange Standards	PN10 DN40	PN10 DN50	PN10 DN65	PN10 DN80	PN10 DN100	PN10 DN125	PN10 DN150	PN10 DN200	PN10/20 DN250	PN10/20 DN300

*** We hereby reserve the rights of any alternative dimension that would help to improve our valve's quality and working efficiency**



SHANGHAI CIPHY INDUSTRY CO.,LTD
 3F-402,NO.1467 CAOBAO Rd. JINGANXIN TOWN
 SHANGHAI, CHINA.
 TEL:+86-21-5497 5962
 FAX:+86-21-5497 5963
 HTTP://WWW.CIPHY.CN
 CIPHY@CIPHY.COM
 COPYRIGHT©2004-[CIPHY]
 ALL RIGHTS RESERVED