

DUCTILE IRON OR CAST IRON FLEXIBLE COUPLING

DESIGN DESCRIPTION:

- Design: Manufactory STD;
- Manufacture: Factory STD;
- PIPE: ANSI B16.9, DIN 2605, JIS B2311;
- Soft seal;
- Working Press. and Working Temp.:
 - ◆ Cast Iron and Ductile Iron: 0 °C-200 °C(32 °F -392 °F)
 - ◆ Buna-N: -10 °C-71 °C(160 °F)
 - ◆ EPDM: -10 °C-80 °C(176 °F)



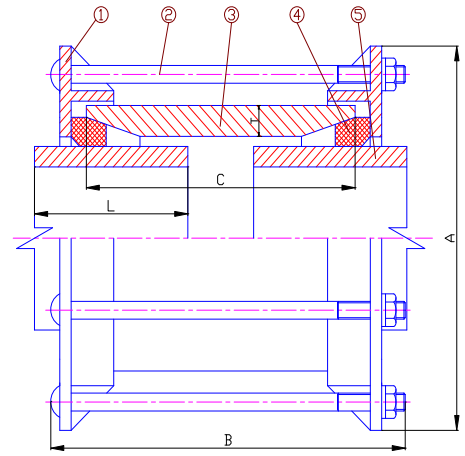
PARTS AND MATERIAL:

NO.	PARTS NAME	MATERIALS
1	FLANGE	ASTM A126-B/A536, DIN GG25/GGG40, BS2789
2	BOLT	STAINLESS STEEL OR CARBON STEEL
3	SLEEVE	ASTM A126-B/A536, DIN GG25/GGG40, BS2789
4	GASKET	EPDM/NBR
5	PIPE	

OTHER MATERIALS ARE AVAILABLE UPON REQUEST.

DIMENSIONS LIST(UNIT:MM):

SIZE	PIPE OD	L	A	B	C	T	n	STUDS
DN50	66	100	152	193	115	6.5	2	M12X170
DN65	87	100	164	193	115	6.5	2	M12X170
DN80	98	100	186	193	115	7	4	M12X170
DN100	118	100	204	218	135	7	4	M12X170
DN125	144	100	222	218	135	7	4	M12X170
DN150	170	100	256	218	135	7	4	M12X170
DN200	222	100	318	208	115	7.5	4	M12X170
DN250	274	100	368	218	115	8.5	4	M12X180
DN300	326	100	420	228	125	11	6	M12X180
DN350	378	150	481	233	125	11	6	M12X195
DN400	429	150	542	233	125	11	8	M12X200
DN450	480	150	596	263	125	11	8	M12X200
DN500	532	150	632	263	152	11	10	M14X230
DN600	635	150	754	263	152	12	10	M14X230
DN700	738	150	865	288	152	12	12	M14X230
DN800	842	150	978	313	152	13	12	M16X240
DN900	945	150	1081	313	178	13	14	M16X275
DN1000	1048	150	1190	313	178	14	14	M16X275
DN1100	1152	150	1294	313	178	15	16	M16X275
DN1200	1255	150	1400	313	178	16	16	M16X275



✧ We hereby reserve the rights of any alternative dimension that would help to improve our valve's quality and working efficiency.